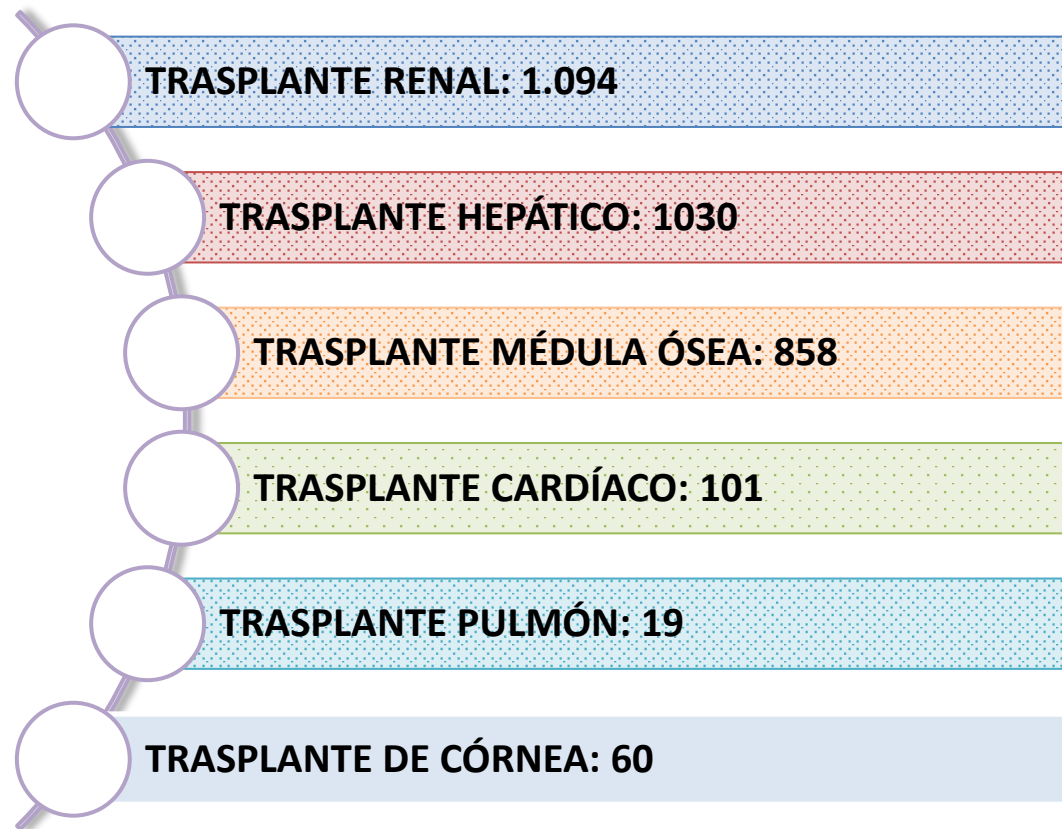


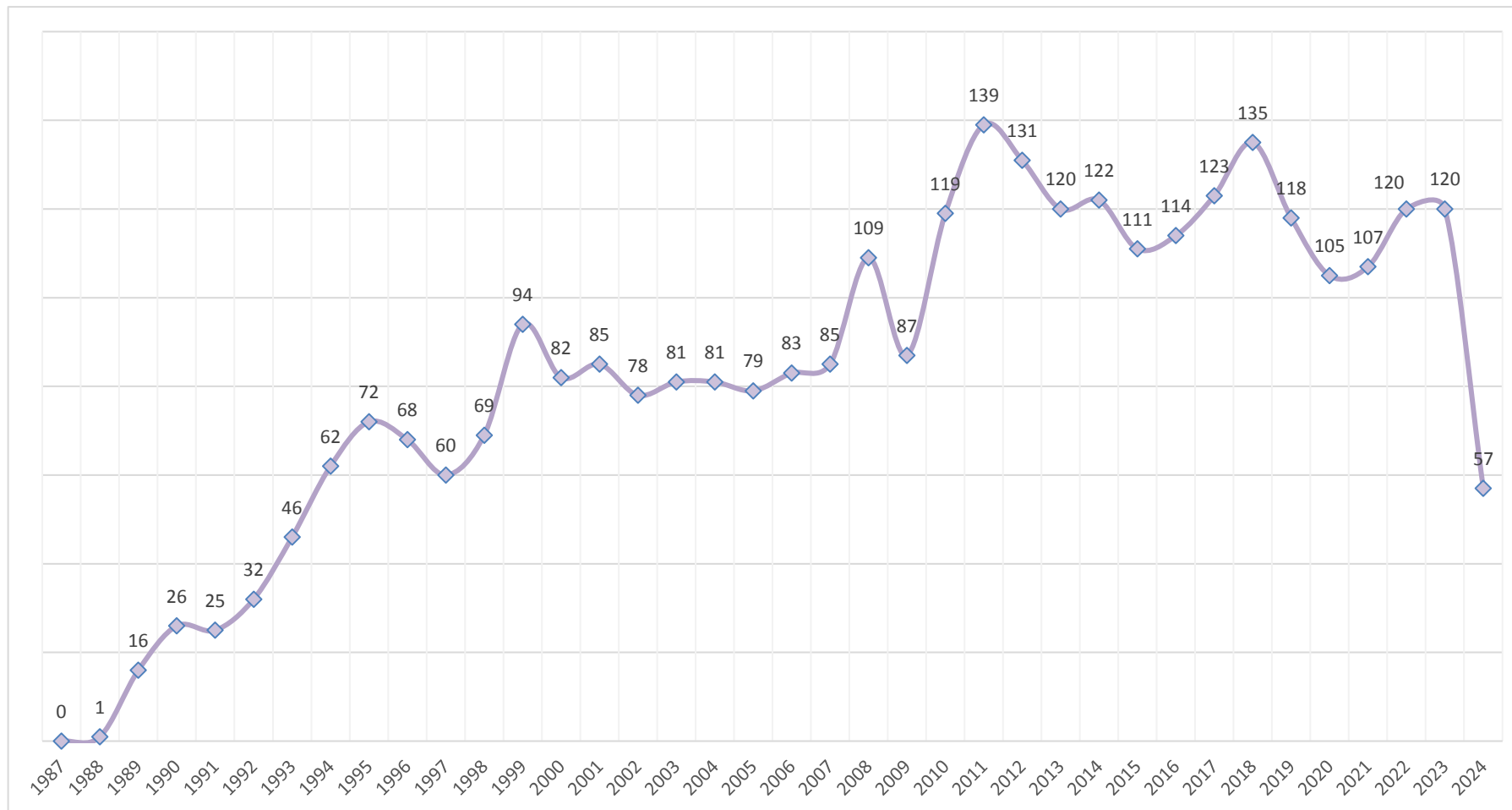
## TRASPLANTES 1987 - 1 sem 2024

**TOTAL  
TRASPLANTES  
3.162**



### TRASPLANTES TOTAL 1987 - 1 sem 2024

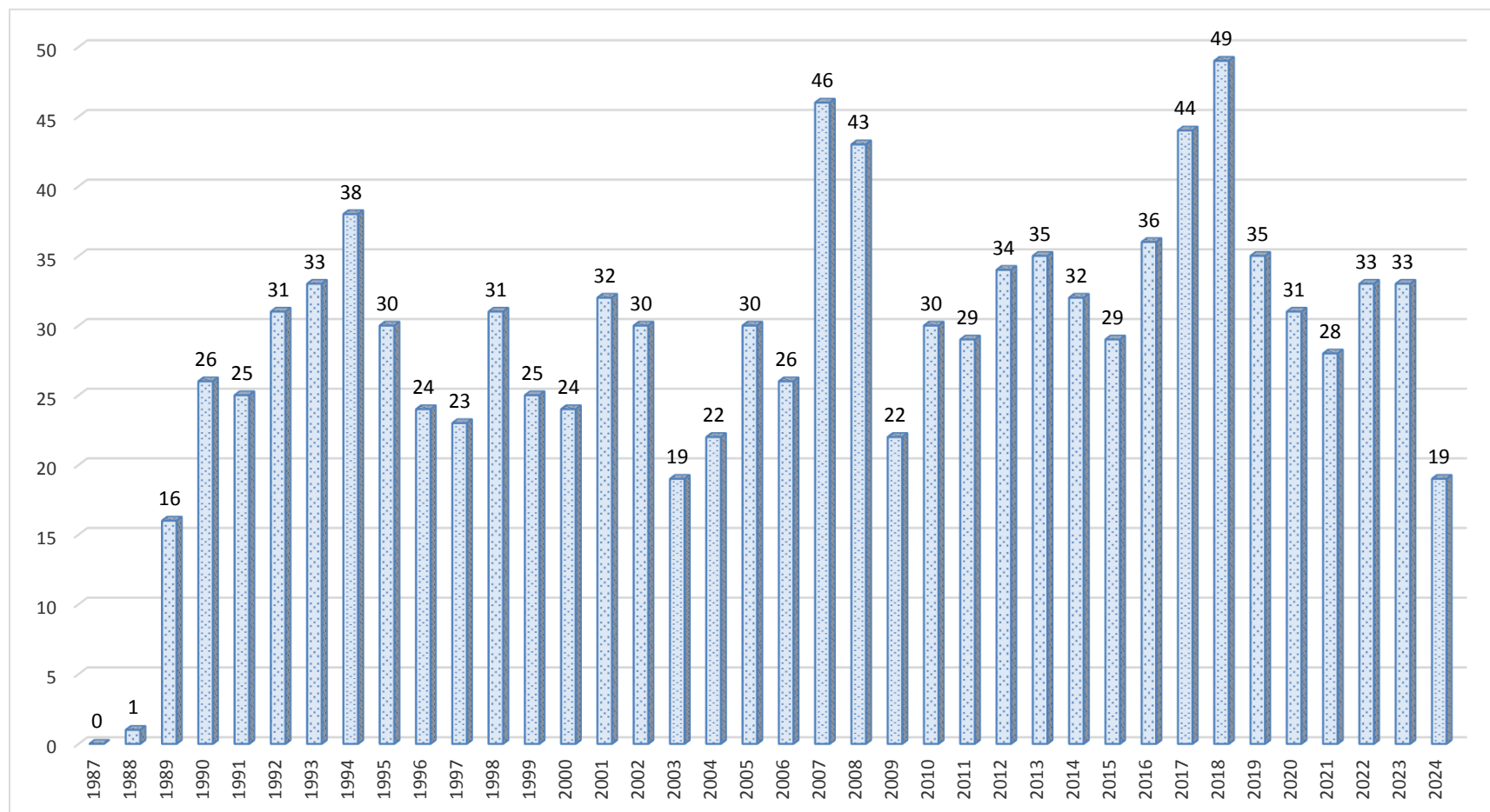
**Total: 3.162**



\*Incluye 60 trasplantes de córnea realizados entre 2008-2012

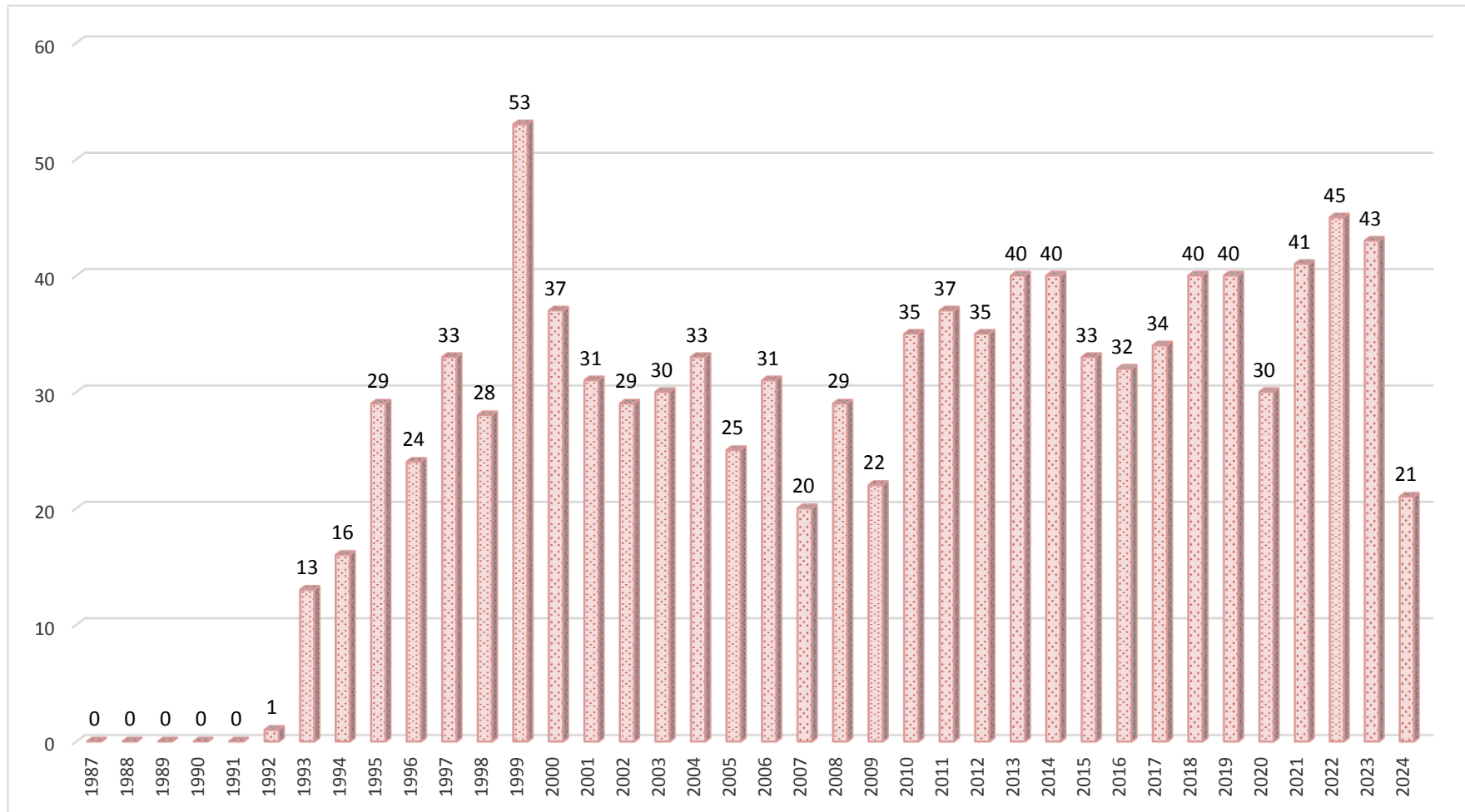
## TRASPLANTE RENAL 1987 - 1 sem 2024

**Total: 1.094**



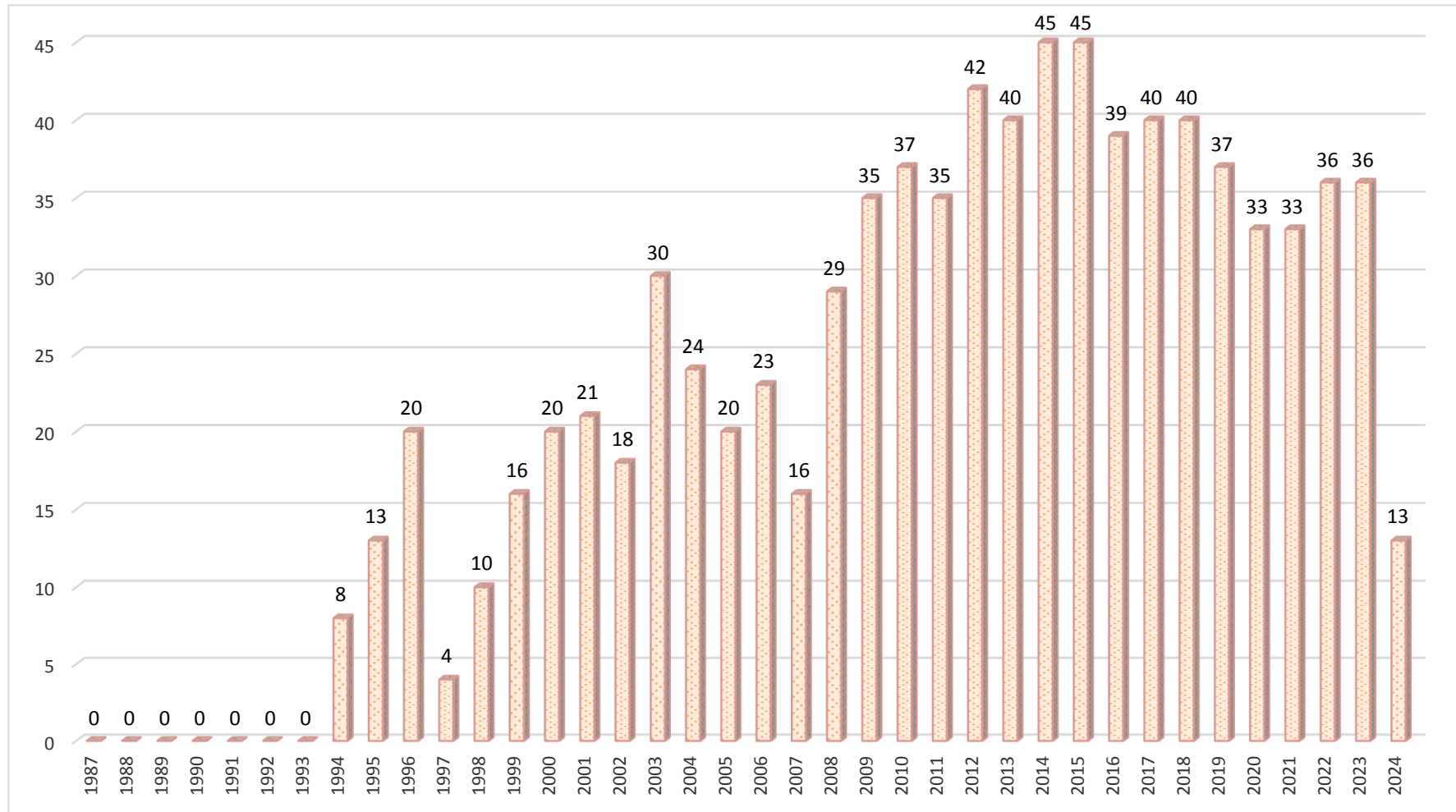
# TRASPLANTE HEPÁTICO 1987 - 1 sem 2024

**Total: 1.030**



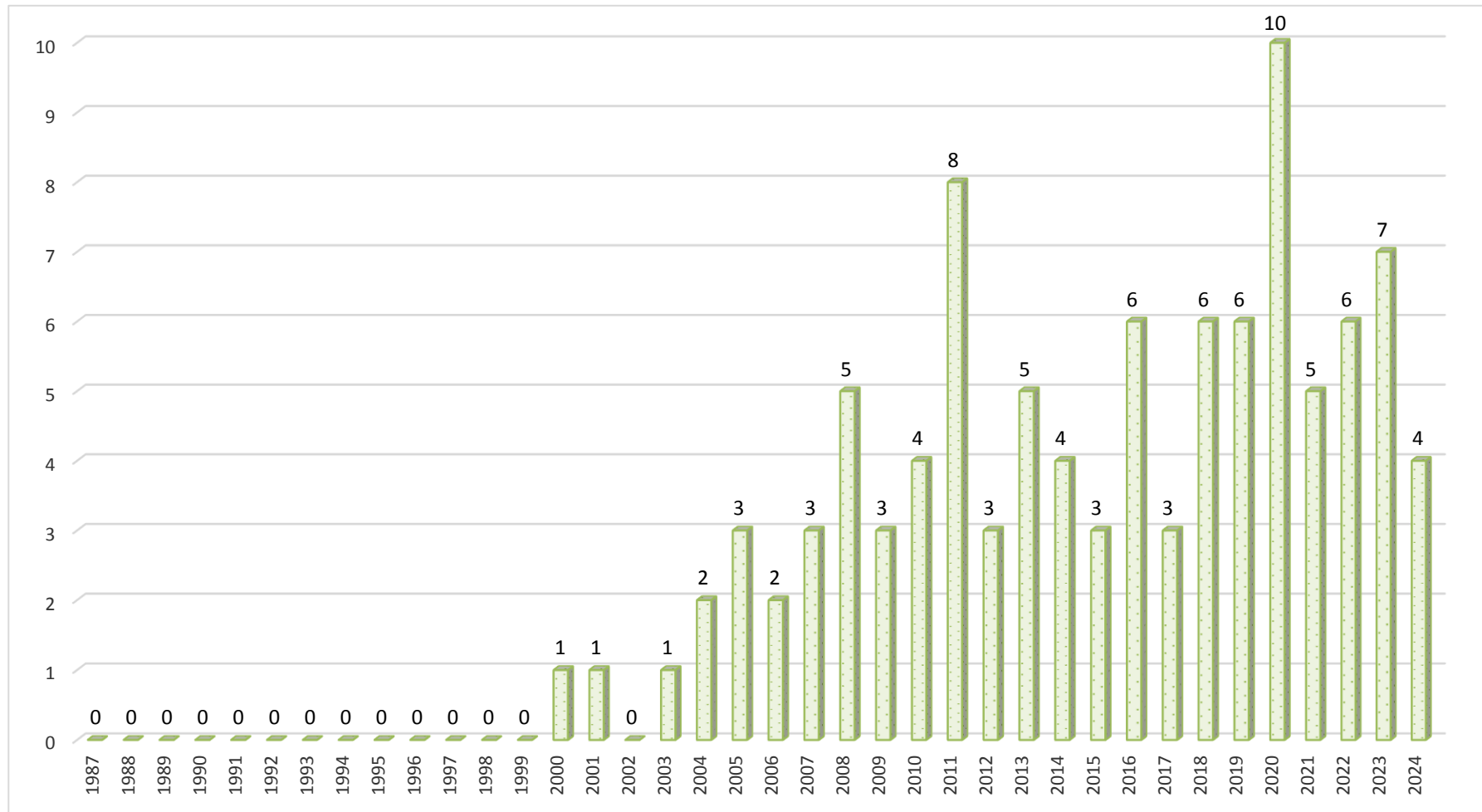
# TRASPLANTE MÉDULA ÓSEA 1987 - 1 sem 2024

**Total: 858**



## TRASPLANTE CARDÍACO 1987 - 1 sem 2024

**Total: 101**



### TRASPLANTE PULMÓN 1987 - 1 sem 2024

**Total: 19**

